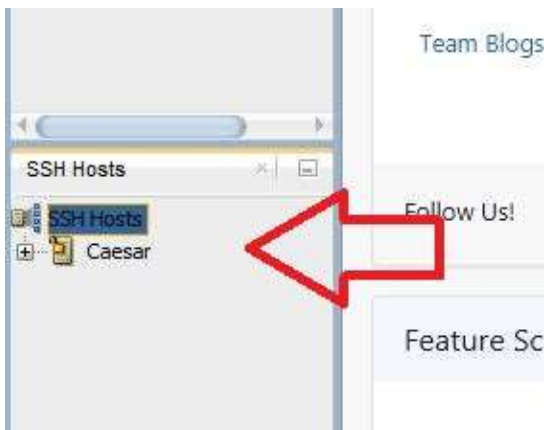


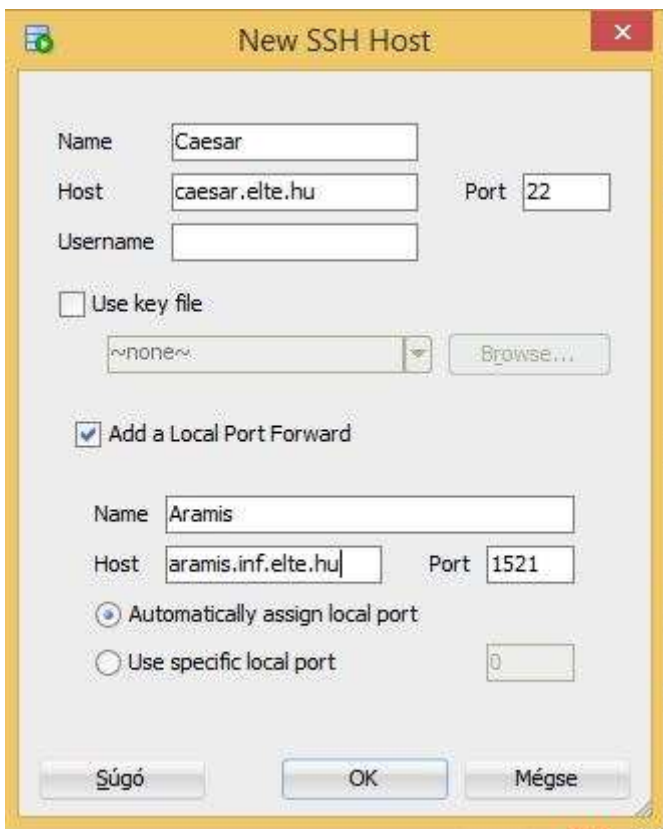
How to connect to Oracle databases from outside ELTE domain. **Version 2** (without putty)

In SqlDeveloper click on the Menu bar: **View/SSH**. After this you will see a small window in the lower left corner showing your SSH hosts.



Right click on SSH Hosts (lower left corner) then select New SSH Host.

You can configure caesar.elte.hu as your SSH host which will forward your local port to the database server's incoming port. By this method SqlDeveloper will implicitly build an ssh connection to caesar.elte.hu with the port forward parameters you specified, so you don't need putty.



Fill in the fields as you can see above.

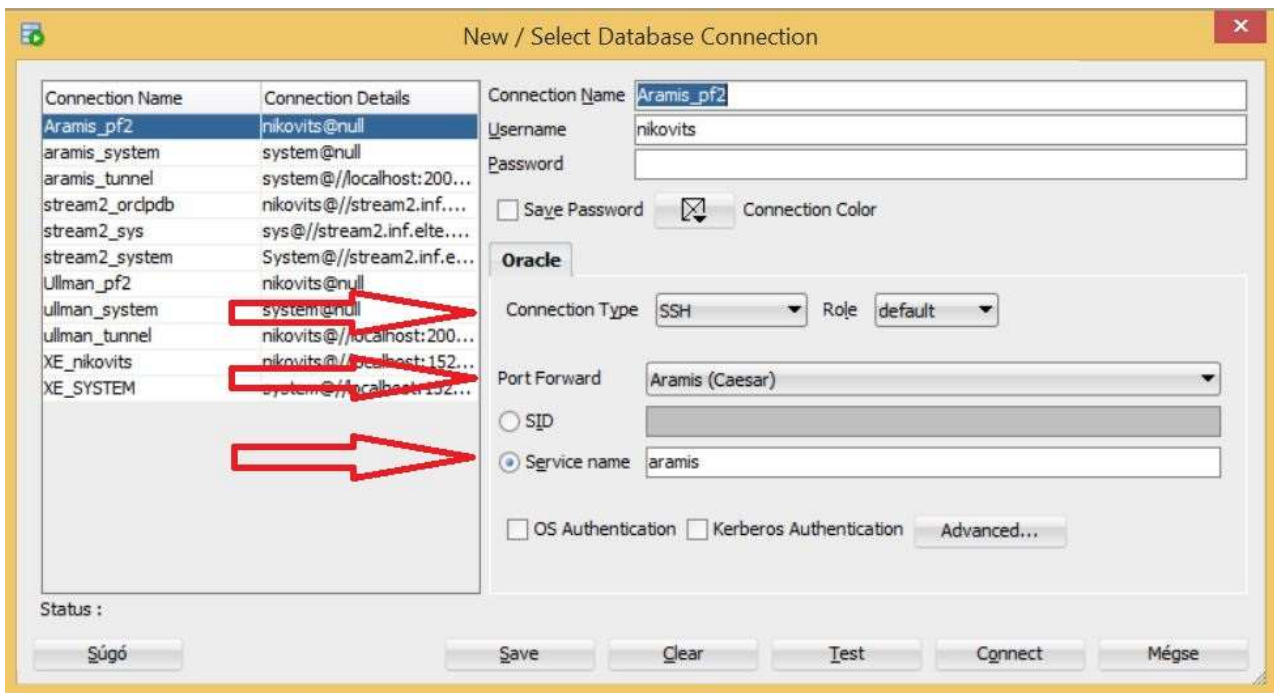
Port 22 is for the implicit ssh connection to caesar.elte.hu.

In **Username** field write your **caesar username**.

You can choose 'Automatically assign local port', or you can give a specific local port, eg. 2001.



Add a new local port forward (right click on Caesar) for Ullman database too, if you need it. The screenshot above shows when you created both.



Specify your **database connection** as you can see above. Take care of **Connection Type** and **Port Forward** fields. You can select from a list of your earlier created SSH hosts and local port forwards.

If you use this method **you don't have to use putty** to login to caesar.elte.hu. SqlDeveloper will build an ssh connection to caesar.elte.hu implicitly. For this purpose Sqldeveloper will ask for your **database password** and **caesar password** too.